

# ARNIO



# 40

rossofiorentino



# Sonic Mastery

The image shows a close-up of a Gothic-style door, likely from a cathedral. The door is dark and features a series of vertical panels, each containing a different carved scene. The carvings are highly detailed, showing figures in various poses and settings. The door is flanked by ornate side panels with more carvings. The overall style is Gothic, with pointed arches and intricate tracery.

# Artistic Legacy



# Introducing the new ARNO Series

---

Introducing the ARNO series, a pivotal step in our tireless pursuit of excellence in sound reproduction. Named after the river that flows through the heart of Florence, this new line is a testament to our ongoing evolution as a loudspeaker manufacturer. For the first time, we offer a comprehensive range that seamlessly fuses the demanding standards of High-End audio with the adaptability required for multi-channel systems. The ARNO loudspeakers deliver an immersive listening experience, built upon a foundation of cutting-edge engineering and long fine-tuning of sound down to the smallest details.

At the heart of this series lies our most significant innovation to date: a proprietary line of drivers meticulously developed in collaboration with a leading Italian manufacturer. Years of research, testing, and refinement have culminated in these exceptional components, which we have exclusively designed for ARNO. Crafted with passion and precision in our Florence facility, the ARNO series is a true celebration of Italian craftsmanship and electroacoustic design excellence.



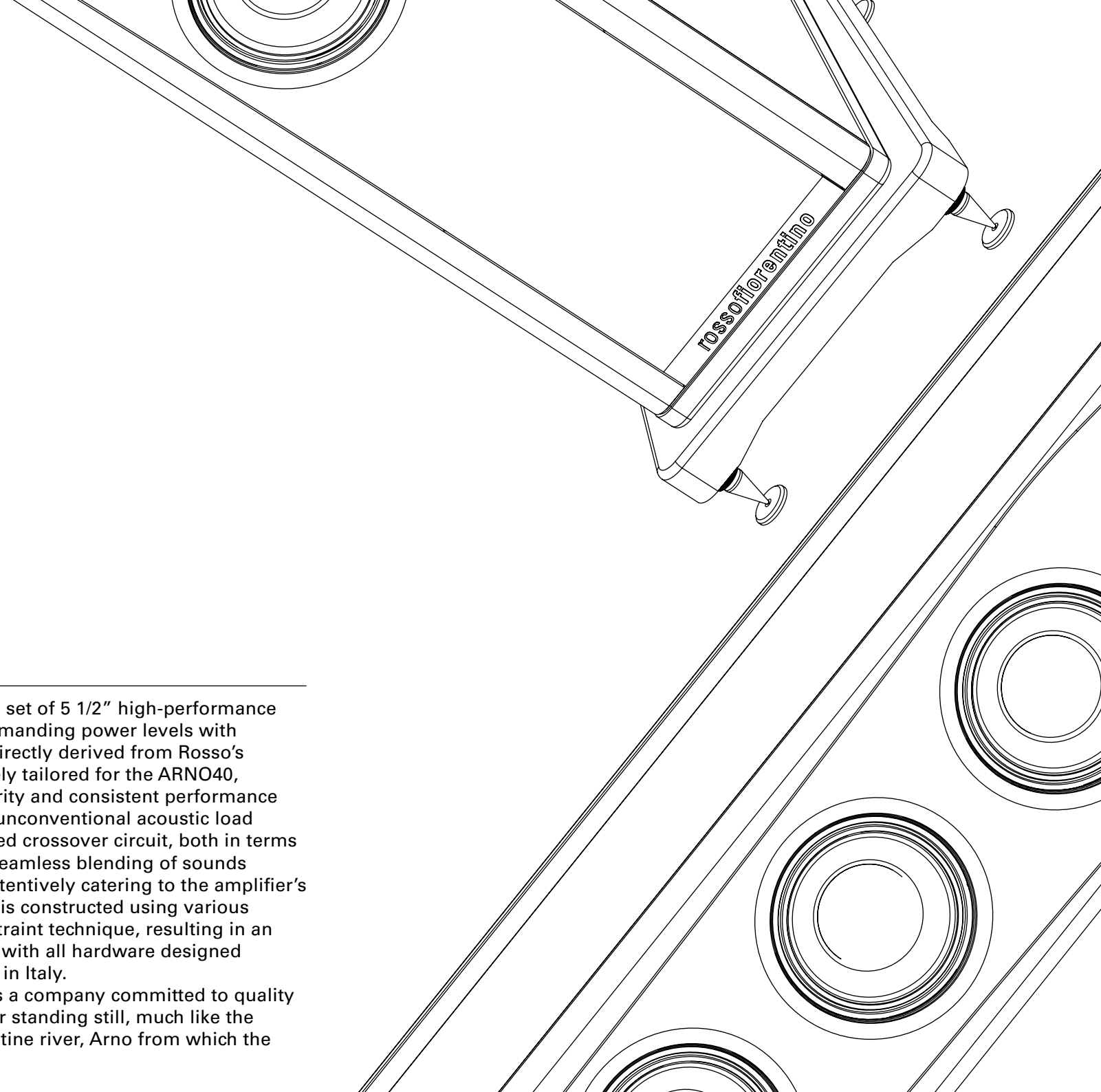








# ARNO40



A sleek design profile featuring a set of 5 1/2" high-performance drivers, engineered to handle demanding power levels with precision, along with a tweeter directly derived from Rosso's flagship Siena model and uniquely tailored for the ARNO40, delivering exceptional sound clarity and consistent performance across a wide listening area. An unconventional acoustic load is paired with an extremely refined crossover circuit, both in terms of components used and in the seamless blending of sounds with great musicality, all while attentively catering to the amplifier's needs. The sophisticated cabinet is constructed using various materials through the layer constraint technique, resulting in an almost resonance-free structure, with all hardware designed in-house and manufactured here in Italy.

In short, a product that embodies a company committed to quality and continuous innovation, never standing still, much like the ever-flowing waters of the Florentine river, Arno from which the entire series takes its name.



# Enclosure

To achieve the most authentic listening experience, it's crucial that the sound emanates solely from the drivers and not the cabinet. Vibrations from the cabinet panels can introduce unwanted distortion into the music. Thus, the walls of a loudspeaker cabinet should be as inert as possible. The constrained layer damping technique, long utilized in Rosso cabinet construction, is also employed throughout the entire ARNO series.

Unlike most cabinets which are made from a single premium material, ours are constructed with a blend of materials possessing complementary acoustic properties. This synergy significantly minimizes internal resonances that can occur during sound reproduction. This 'team' of materials ensures optimal rigidity, inertia, and damping, bringing us closer to the ideal of a resonance-free cabinet. The result? A purer sound, with a more defined soundstage, a more impactful bass transient response, and improved overall clarity. Listeners will perceive a deeper silence between notes, with enhanced rhythmic timing and musical flow.

In line with our construction tradition, the ARNO speakers also employ various types of fibrous materials (completely safe and non-releasing fibers into the air over time) with different densities to broaden the damping spectrum across multiple frequencies. Additionally, medium-low frequency damping zones are utilized through air 'cushions' that function as resonators, absorbing energy from the cabinet resonances while scattering the waves at mid-high frequencies improving the distribution of acoustic energy inside the box.





# Drivers



---

## A Partnership Aiming for Perfection: Crafting Custom Drivers.

We design and develop nearly every aspect of a Rosso loudspeaker in-house. However, our commitment to advancing audio technology led us to collaborate with specialized manufacturers, crucial for achieving the highest quality. This approach was key in developing our drivers, where partnering with a renowned Italian manufacturer turned our ideas and designs into tangible, premium products. By working closely with them, we optimized every detail of the driver's design, from materials to manufacturing processes. This meticulous engineering has resulted in a truly unique line of Rosso drivers, crafted exclusively for our ARNO speakers.

# Tweeter & Midwoofer

---

All ARNO speakers feature our custom Italian-made tweeter derived from the Siena model, optimized for this line. It boasts a silk dome with special damping treatment, a 28 mm aluminum voice coil, and high sensitivity. Equipped with a powerful neodymium magnet and a low resonance frequency, it can handle high wattage even when crossed at lower frequencies. Furthermore, the front panel design with its shallow waveguide enhances off-axis performance, ensuring smooth and consistent sound.

The midwoofer is engineered to deliver consistent performance both on-axis and off-axis, with outstanding high-frequency extension, a low resonance frequency, and robust power handling. Its impressive linear excursion, coupled with wide mechanical limits, results in low total harmonic distortion (THD). The 38 mm copper voice coil, mounted on a Kapton former, handles up to 120 watts AES. The double asymmetric rolls rubber suspensions enable greater cone excursion while minimizing mechanical distortion, ensuring clear and accurate bass. Additionally, the cone features a differentiated damping treatment on the front and rear, effectively reducing breakups and enhancing long-term durability.





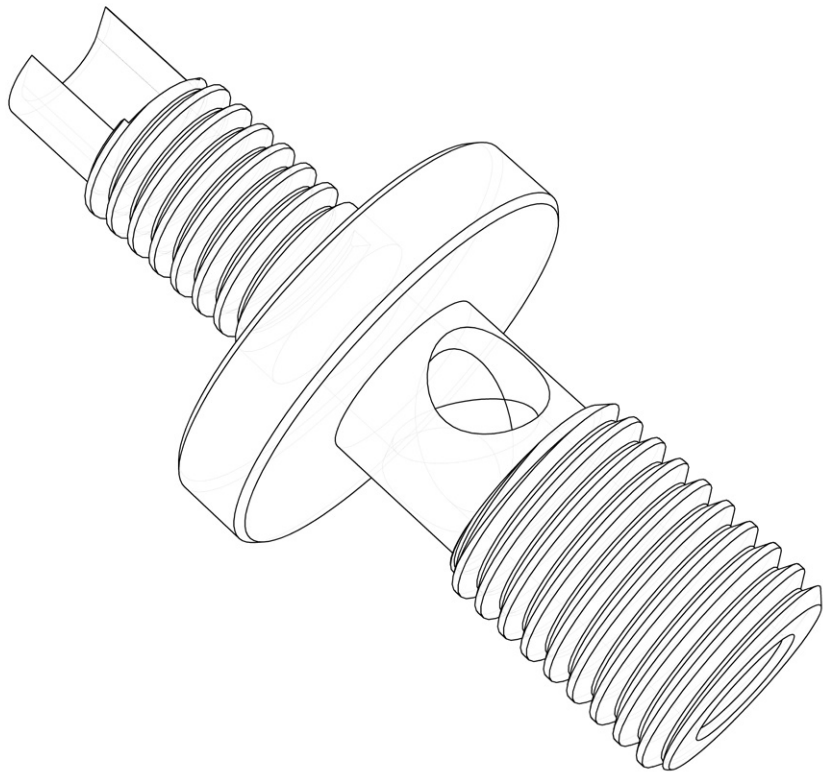
# Crossover

In our design philosophy, we don't adhere to a single electroacoustic approach. Instead, we choose the technique that best achieves the desired result for each product. For example, while some manufacturers rigidly favor first-order crossovers, we employ the most effective filtering method for our goals, without constraints. For us, the outcome is paramount, always guided by our academic expertise in electroacoustics and practical experience. For the ARNO40, the crossover has been meticulously engineered from scratch. Each circuit is crafted using high-quality components from leading international manufacturers and enhanced with exclusive, in-house developed elements, such as our custom coils. In line with our approach, we have implemented various types of filtering and included a circuit section specifically designed to ease the amplifier's load. By making the impedance more resistive and stable, we ensure that the amplifier operates more comfortably, resulting in superior sound quality.





# Hardware



All mechanical parts are made here in Italy and designed by us. From aluminum vented ports to spikes and counter-spikes, to front panels milled from 8mm aluminum sheets where the drivers are housed. Even the connectors are made here by us from pure copper, which is then plated in gold and palladium for eternal durability. Not to mention the anodized aluminum bushing with a friction lock to securely hold any type of cable.





# Finishes

Finishes are one of our strong suits. It couldn't be otherwise, we are Italian. Once a project is completed and the product is realized, choosing the perfect "outfit" is something that excites us, gratifies us, and highlights the product.

That's why we offer a catalog of various finishes that we have carefully tested and refined over the years. However, in addition to our suggestions, we also provide the option for clients to choose the finish that best suits their preferences, allowing them to personalize an exclusive product like Rosso Fiorentino.

Here's a brief overview of the available options:

- Standard: High gloss black or matte walnut (natural look).
- Premium leather: An almost infinite selection of fine Italian leathers
- Custom lacquer: A color of the client's choice, whether glossy or matte.
- Carbon fiber: Carbon fiber, offering a look that is both classic and modern, available in glossy or matte finishes

## STANDARD FINISHES



• Walnut



• Piano black

## PREMIUM LEATHER



- Rosso Siam



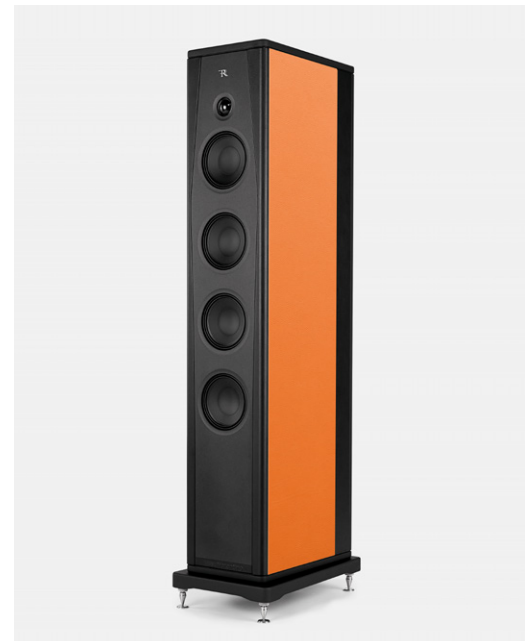
- Grigio Smoke



- Bianco Ivory



- Blu Pacific



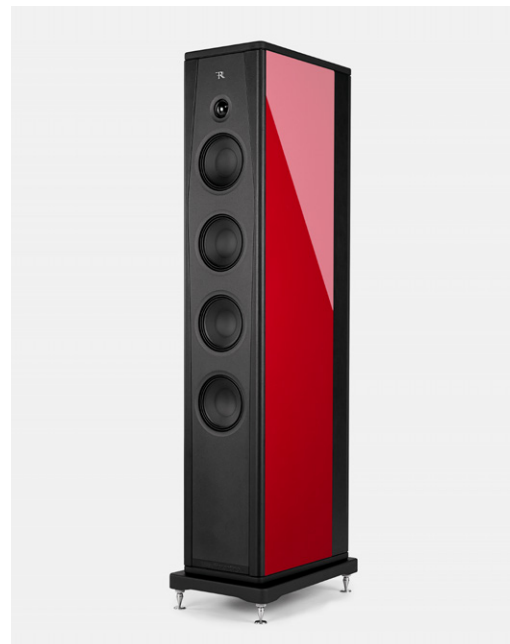
- Arancione Sunset



## LACQUERS



- Verde British



- Rosso Corsa



- Blu Cobalto



- Grigio Silverstone



- Grigio Dakar

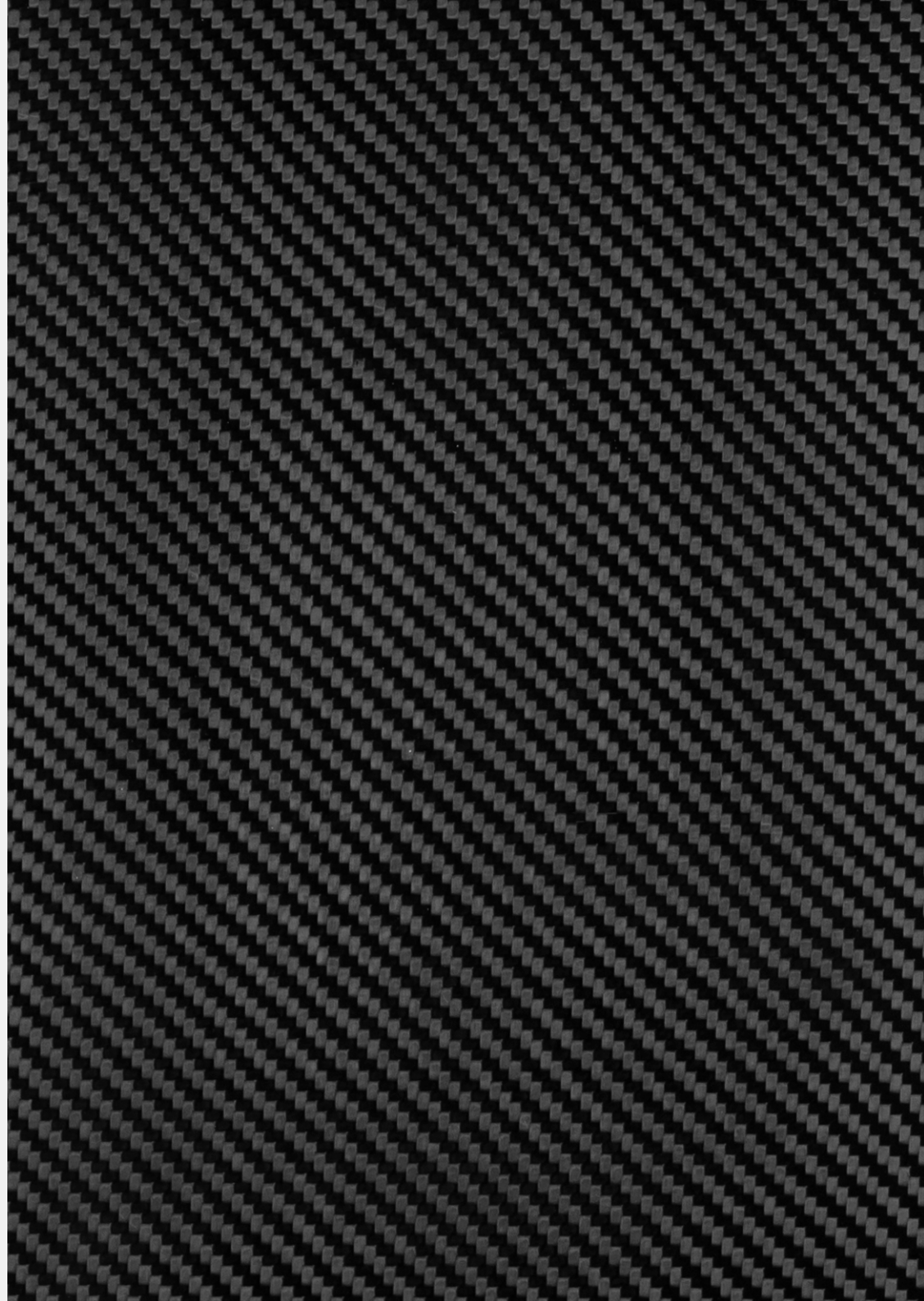


- Moka

## CARBON

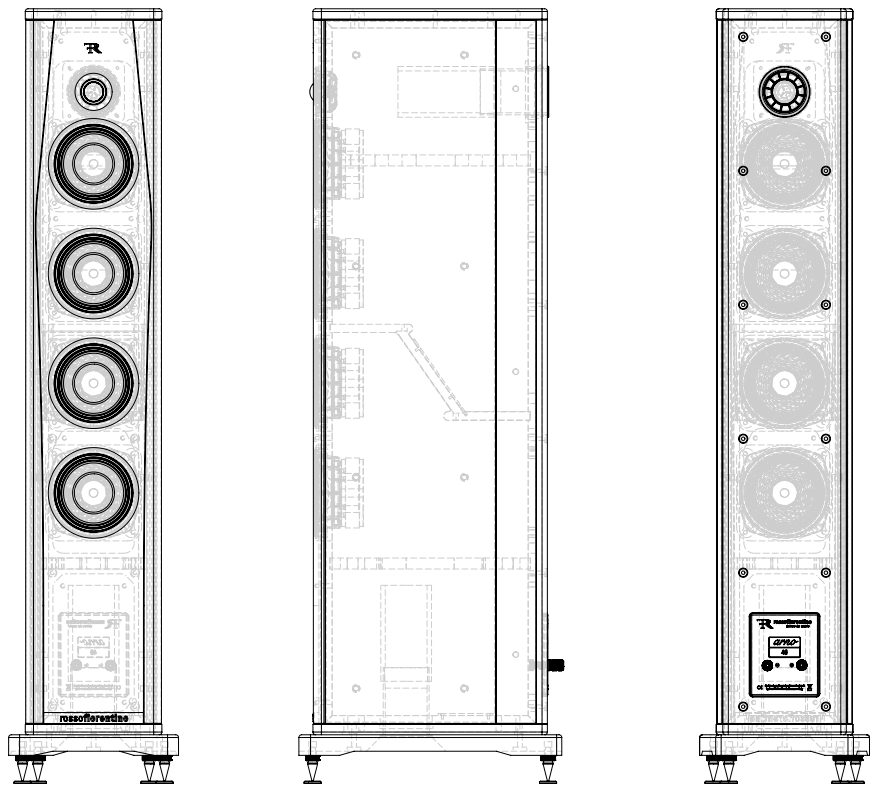


- Carbon fiber





# Technical Specifications



Type	2.5 - way rear/down firing ported floorstanding system
Sensitivity	90 dBspl (2.83V, 1m)
Nominal impedance	8Ω (minimum 4,8Ω)
Drive units	<ul style="list-style-type: none"><li>• 1 x ø 28mm (1.1 in) silk dome neodymium tweeter</li><li>• 1 x ø 150mm (5.5 in) paper treated cone mid-range</li><li>• 3 x ø 150mm (5.5 in) paper treated cone mid-woofer</li></ul>
Frequency response (±3dB)	35Hz – 25kHz
Crossover frequencies	High extended energy filler – 2.0kHz
Recommended amplifier power	25W – 150W into 8Ω with unclipped sound signal
Cabinet	Constructed with multiple solid layers of HDF, rubber, and aluminum using the Constrained-layer damping method for perfect vibration control.
Dimensions	<ul style="list-style-type: none"><li>• Height: 1130mm (44,5 in) incl. plinth and spikes</li><li>• Width: 200mm (7.9 in)   248mm (9.7in) including plinth</li><li>• Depth: 342mm (13,4in)   383,5mm (15,1in) including plinth</li></ul>
Net weight	38 Kg (83,8 lb) each
Cabinet finish	<ul style="list-style-type: none"><li>• Exclusive RF soft touch black coating</li><li>• Black genuine leather (front panel and side stripes)</li></ul>
Side panels	<ul style="list-style-type: none"><li>• Standard: Available in Glossy Black or Natural Walnut finishes.</li><li>• Genuine Leather: A premium option featuring high-quality genuine leather for a luxurious look and feel.</li><li>• Custom Lacquer: A customizable finish available in various lacquer colors upon request, offering a unique and personalized appearance.</li><li>• Carbon Fiber: A sleek and modern finish made from glossy carbon fiber, known for its strength, lightweight, and stylish aesthetics.</li></ul>







# ARNO Series

- ARNO40: a 2.5-way floorstanding speaker
- ARNO20: a powerful 2-way standmount speaker with dedicated stand
- ARNOcc: a 2.5-way center speaker that can be used as Left-Centre-Right (LCR) speakers
- ARNO sub: an overdamped 10" subwoofer with proprietary electronics

ARNO20



ARNO40



ARNOcc



ARNOSUB





# The meaning of a brand name



Rosso Fiorentino, *Angelo musicante* (1522)

Rosso Fiorentino (*Giovann Battista di Jacopo*, Firenze 1495 – Fontainebleau 1540) was one of the most talented and unconventional Florentine artists of the early 16th century. He assimilated the innovations of *Leonardo*, *Michelangelo* and *Raffaello* but went on to experiment with a freer technique and more abstract forms.

His paintings forcefully express the strength of the colours, the sophisticated interpretation of the details, the luminosity of the reflections and an underlying artistic rigour.

The gauntlet he threw down to those who had already interpreted all there was to interpret is something that intrigues us and inspires our work daily.



# Notes

**Rosso Fiorentino Audio srl**

**Via delle Acacie 6/7  
50012, Bagno a Ripoli  
Firenze, Italia**

**www.rossofiorentino.com  
info@rossofiorentino.com  
+39 055 8028824**

---

**rossofiorentino**

